

cassette Settings

INSTALL GUIDES

**THIS GUIDE HAS BEEN PUT TOGETHER
TO HELP YOU INSTALL CASSETTE
PRINT SPECIFIC SETTINGS .**

Included in this guide are the following:

- InDesign Preflight
- Distiller Settings
- Acrobat Preflight

If you have any issues please consult our
File Preparation Guide, alternatively please
contact an account manager.

INSTALL GUIDE:

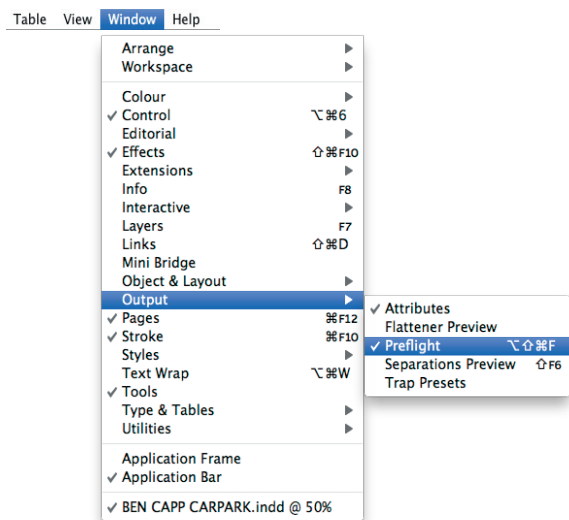
InDesign Preflight

InDesign Preflight will help you correct your document as you are designing. It will flag any errors before you get to the final stages of designing.

STEP 1

- Open InDesign and set up your document
- In the menu select **Window > Output > Preflight** (See Fig. 1)

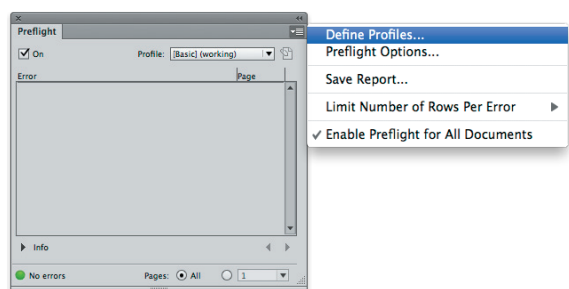
FIG. 1



STEP 2

- In your Preflight window, select the drop down menu in the top right corner
- Select > **Define Profiles** (See Fig. 2)

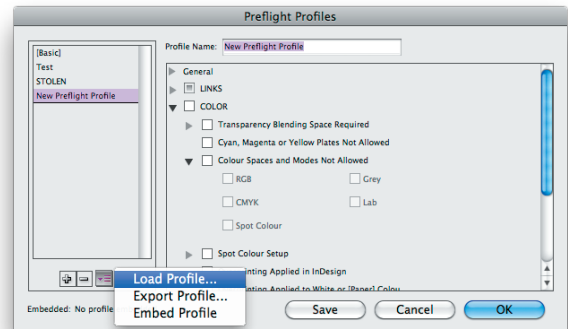
FIG. 2



STEP 3

- In this window, in the bottom left corner **click on the drop down menu button** next to the minus button
- Select > **Load Profile**
(See Fig. 3)
- **Locate one of the preflight files** you downloaded *Cassette CMYK.idpp* or *Cassette Spot.idpp* (These may be in your downloads folder)
- **Click OK** to load the setting

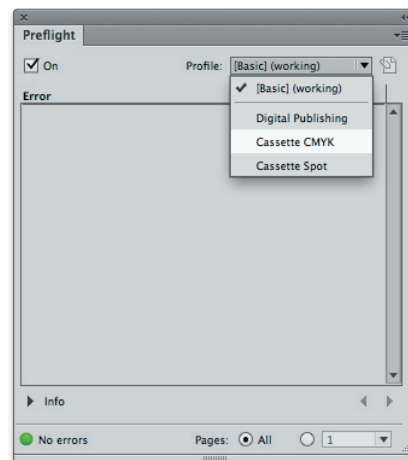
FIG. 3



STEP 4

- **Select your setting** in the drop down menu (See Fig.4)
- **Repeat** Steps 2 and 3 to install other settings
- While designing **keep an eye on this window** for any errors that may occur

FIG. 4



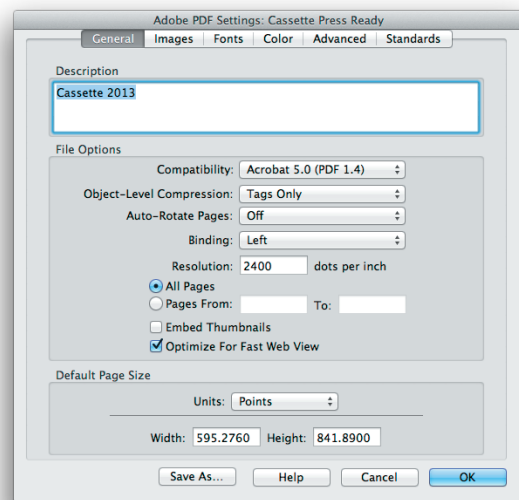
INSTALL GUIDE: Distiller Settings

Distiller is a Cassette setting used to output PDFs in a press ready format. To install this, you will require In Design or Illustrator, in any version.

STEP 1

- **Download the setting**, and double click to install. Click > **Ok** (See Fig. 1)
- **Open In Design or Illustrator** and create your document
- When it is ready to save for press, **export as a PDF** and follow the instructions below

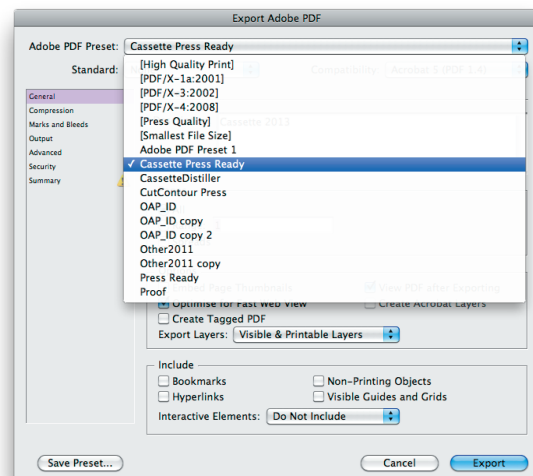
FIG. 1



STEP 2

- Select the drop down > **Adobe PDF Preset**
- Select > **Define Profiles**
- Click on > **Cassette Press Ready**
- Select > **Save**, and your press ready PDF will be ready to go. (See Fig 2)

FIG. 2



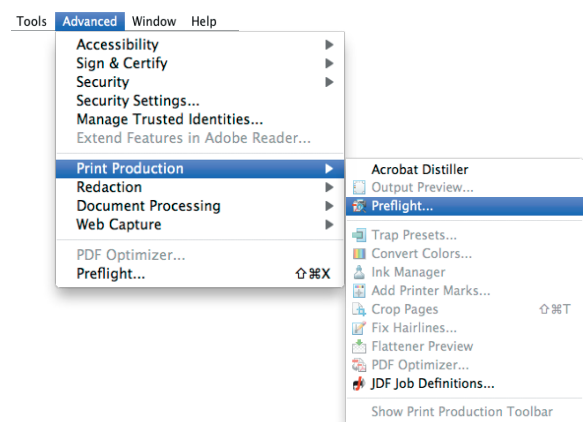
INSTALL GUIDE: Acrobat Preflight

Once you have saved a PDF, these settings will help you check whether the document is ready for print in Adobe Acrobat.

STEP 1

- Download the setting
- Double click the downloaded file and **select Adobe Acrobat to open**
- In the top menu click on
> **Advanced > Print Production > Preflight** (See Fig. 1)

FIG. 1



STEP 2

- A preflight window will open, click on the top right corner on the > **Options** button (See Fig. 2)
- Select > **Import Preflight Profile** and locate the file you have downloaded (See Fig. 2)
- The Cassette settings are now loaded on your preflight profiles
- Double click a setting (Eg. Offset) and a list of problems will appear. Check for low res images, unwanted spot colours, RGB images and more.

FIG. 2

